

# FerriSSD®

## For Embedded Computing Applications

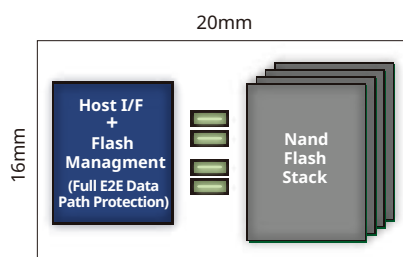


### FerriSSD® Single-Chip SSD

The FerriSSD® is designed optimally for a wide range of embedded applications requiring faster access speed, small flexible form factor and reliable PCIe NVMe/SATA/PATA storage. By combining industry proven controller technology, NAND flash and passive components into a small single BGA package, FerriSSD® simplifies design efforts, reduces time-to-market while protecting from NAND technology migration concerns.

The FerriSSD® family consists of the latest SM689 PCIe NVMe, SM619 SATA and legacy SM601 PATA series featuring high throughput transfer rate with embedded DRAM to enhance data storage efficiency and high random read/write IOPS. The 4th generation FerriSSD leveraging Silicon Motion's most advanced technologies, including IntelligentScan, DataRefresh, high bandwidth LDPC ECC engine with SMI group RAID, and End-to-end data path protection to provide unsurpassed data integrity in a non-volatile storage device. All FerriSSD® series support 3D SLCmode, MLCmode, and TLCmode NAND flash options.

### SMI Single-Chip SSD Overview



### Available Density

3D SLCmode	4~160GB
3D MLCmode	8~320GB
3D TLCmode	16~480GB*

*\*1TB in Q3'2020*

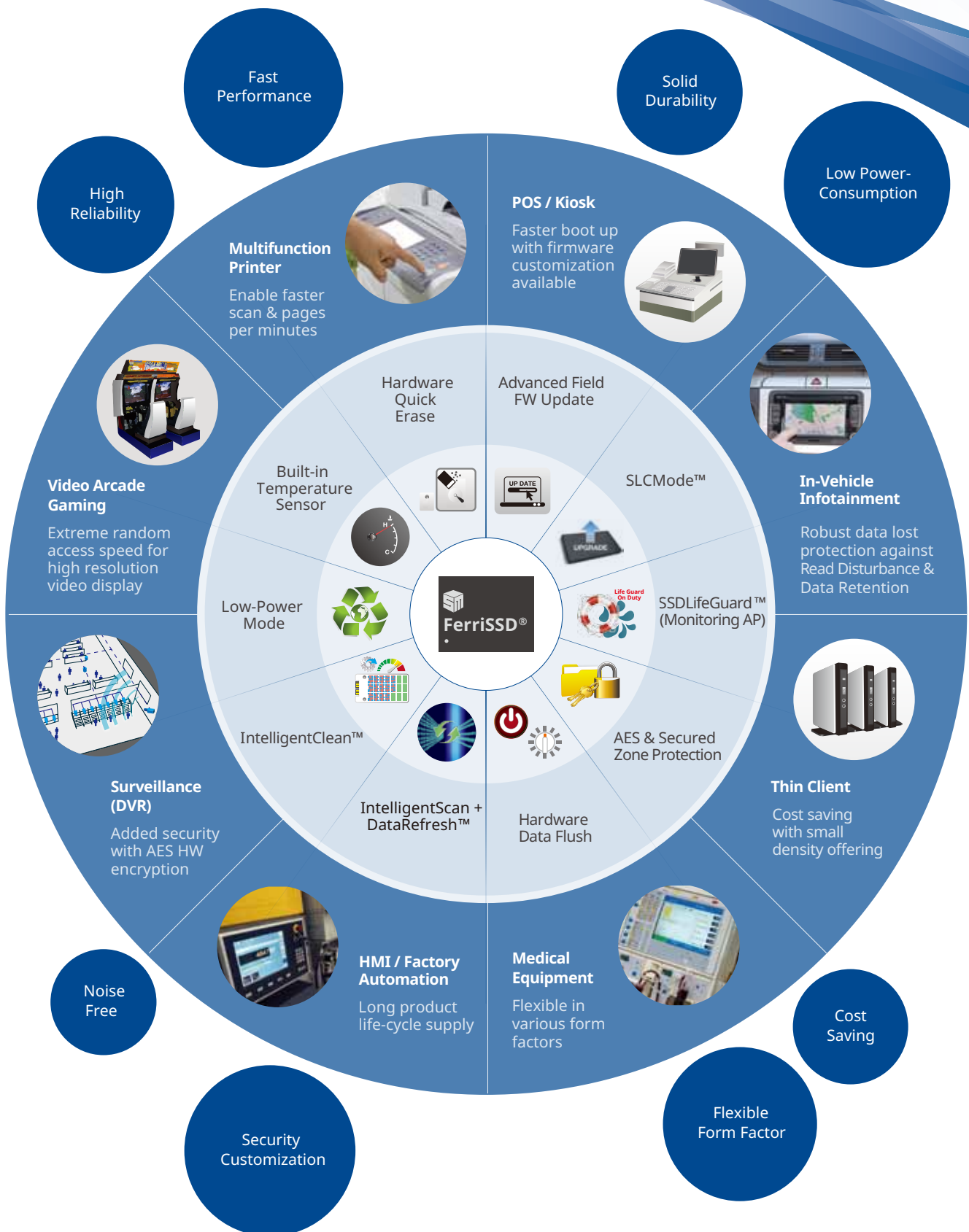
### Embedded Computing Applications

- POS / Kiosk
- Video Arcade Gaming
- Multifunction Printer
- In-Vehicle Infotainment
- Surveillance (DVR)
- Thin Client
- HMI / Factory Automation
- Medical Equipment

### Specifications

<b>Data Retention</b>	JESD47G compliant
<b>Form Factor</b>	20mm x 16mm BGA
<b>Green Product</b>	Compliant to RoHS (Restriction to Hazardous Substances Directive) 2.0 / Halogen free
<b>Temperature Support</b>	Commercial Temp (0°C to +70°C) Industrial Temp (-40°C to +85°C)

Application Examples :



For more information about FerriSSD®, please go to [www.siliconmotion.com](http://www.siliconmotion.com) or send e-mail to [ferri@siliconmotion.com](mailto:ferri@siliconmotion.com)